

# Integrated Flow Cytometry Resource

Flow cytometry has become a critical tool in the development of therapeutic modalities which impact the immune system. The increase in client demand for flow cytometry services in oncology, immunology, and infectious disease, has spurred Eurofins Clinical Trial Solutions to invest significantly in industry-leading technologies, experienced assay development scientists, and bioinformaticians; to enable us to better support clinical development today and into the future.

We have long provided custom flow cytometry assay development, validation and analysis to fit our customers' needs, but with the creation of our new flow cytometry centers of excellence, we are well positioned to provide custom global solutions, with our integrated team of scientific experts, across a broad range of flow cytometry applications.

## Over 20 Years of Experience

### Functional Assays and Antigen-specific Responses

- Ex vivo stimulation
  - Tumor associated antigens
  - Viral antigens
- Intracellular Cytokines
- Tetramer staining
- Signaling (phosphorylation and acetylation)

### High-parameter Immunophenotyping

- B cell subsets
- NK cell subsets
- T cell exhaustion, activation, checkpoint
- T cell maturation and subsets
- Monocytes

### Other

- Cellular Kinetics
  - Engineered cells
  - CAR-T cells
- Immunogenicity (NAb / ADA)
- Receptor Occupancy

### Regulated Settings

- CAP/CLIA
- GCLP
- GLP/GLP-Like

### Specimen Types

- Whole Blood
- Bone Marrow
- Cryopreserved PBMC
- Tissue Samples

**Currently  
Developing  
Off-the-Shelf  
Spectral Panels**

## Eurofins Global Flow Cytometry Network

### St. Charles, MO, USA (BioA)

- Agilent NovoCyte Quanteon, 4-laser, 25-color
- BD FACSCanto™ II Flow Cytometer, 3-laser, 8-color

### Lenexa, KS, USA (Viracor BioPharma)

- BD FACSsymphony™ A5, Spectrally Enabled, 5-laser, 48-color
- BD FACSCanto™ II Flow Cytometer, 3-laser, 8-color



### Lancaster, PA, USA (Central Laboratory)

- BD FACSlyric™ 3-laser, 10-color
- FACSCanto™ II Flow Cytometer, 3-laser, 8-color

### Breda, Netherlands (Central Laboratory)

- BD FACSlyric™ 3-laser, 10-color
- FACSCanto™ II Flow Cytometer, 3-laser, 8-color
- BD FACSsymphony™ A5, Spectrally Enabled, 5-laser, 48-color

### Singapore (Central Laboratory)

- FACSCanto™ II Flow Cytometer, 3-laser, 8-color

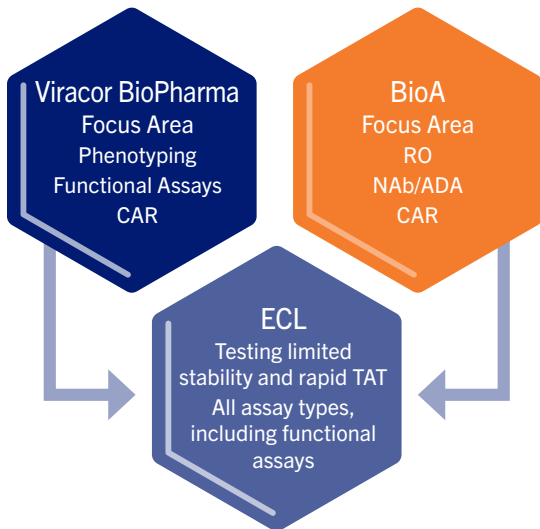
### Shanghai, China (Central Laboratory)

- FACSCanto™ II Flow Cytometer, 3-laser, 8-color



## Integrated Structure

- Two Centers of Excellence
- Sample testing
- Technology transfer, expertise and support to Eurofins Central Laboratory (ECL)
- Assay development/Assay validation
  - Fully aligned with CLSI H62



## Flow Cytometry Resources



**WEBINAR**  
**Quantitative Measurement  
Solutions for Flow Cytometry**



**WEBINAR**  
**Utilizing Flow Cytometry for  
Humoral Immunogenicity Testing:  
Cell & Gene Therapy**



**WEBINAR**  
**Rare Event Analysis in Flow Cytometry:  
Design Control and Validation Aligned  
with CLSI H62**

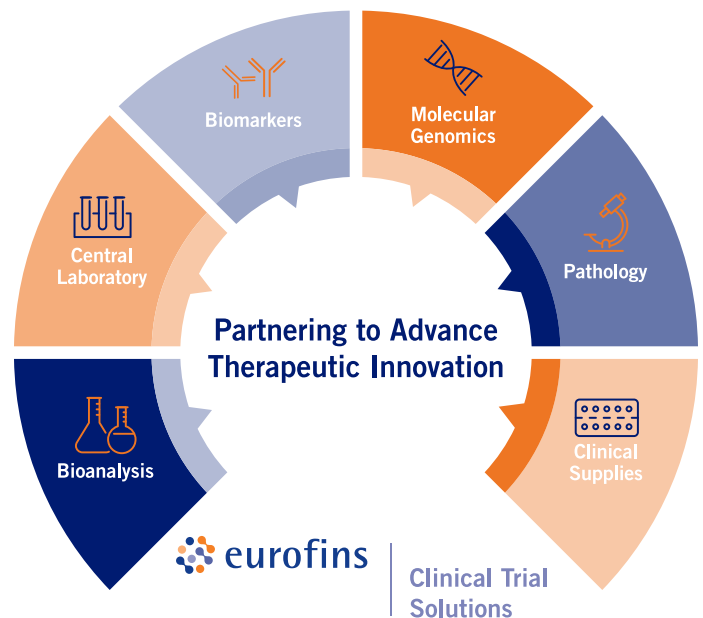


**ARTICLE**  
**Using Spectral Flow Cytometry for CAR  
T-Cell Clinical Trials: Game Changing  
Technologies Enabling Novel Therapies**

## Global Leadership

**Virginia Litwin, Ph.D.,  
Director of Scientific Affairs**

- President-Elect, International Society for the Advancement of Cytometry
- 2023 recipient of Wallace H. Coulter Award, International Clinical Cytometry Society
- Chair CLSI H62
- Co-founder AAPS Flow Cytometry Committee



**Eurofins Clinical Trial Solutions**

[clinicaltrials@bcl.eurofins.com](mailto:clinicaltrials@bcl.eurofins.com)  
[eurofins.com/clinicaltrialsolutions](https://eurofins.com/clinicaltrialsolutions)

**For more information, please contact [clinicaltrialsolutions@bcl.eurofins.com](mailto:clinicaltrialsolutions@bcl.eurofins.com)**